

Index

Topic	Page Number
1-Using RECOCASE	2
2-The Team	3
3-FAQ	4
Project	4
Shared Use Case	5
Viewpoint (Use Case)	6
Group Viewpoints	8
Resolution Table	9
Lattice	10
General	12
4-Guide Lines	13

USING RECOCASE

How to start RECOCASE

Make sure the SQL server is on (Antinav access component)

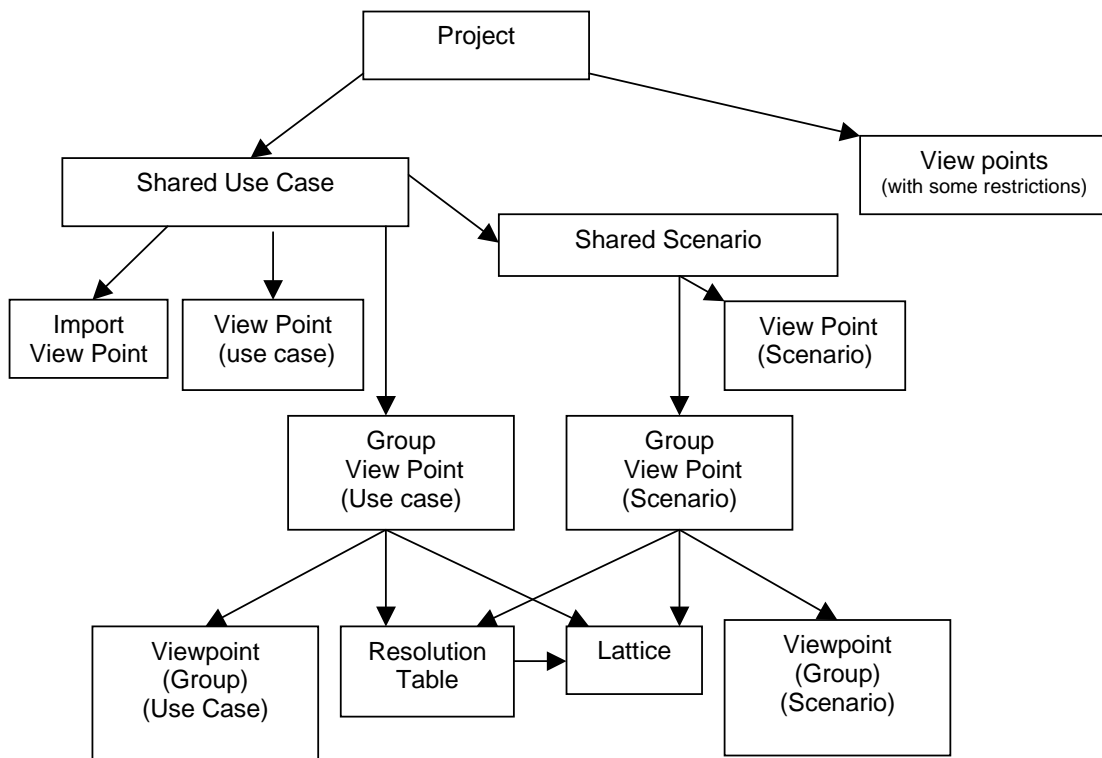
At the command line type:

```
bash
```

```
cd projects/RECOCASE/
```

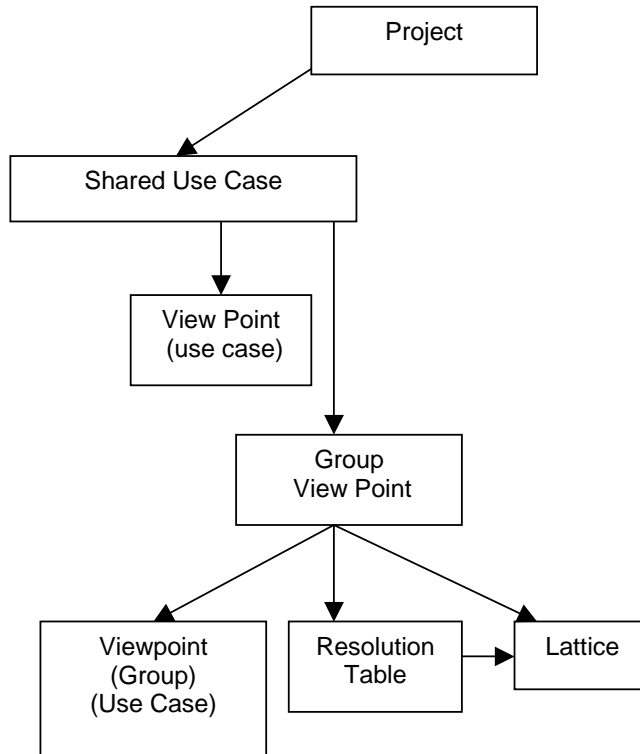
```
make start
```

Complete Project flow



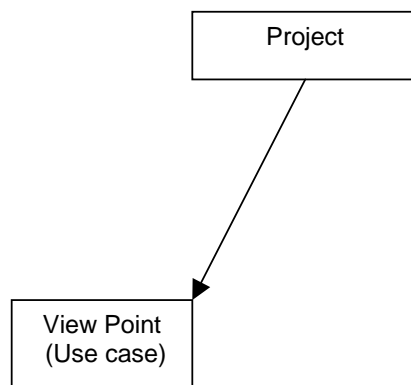
Project Leader

The project leader is responsible for the creation of the project and shared use cases so that the team members can enter their viewpoints for each use case created. The team leader will then reconcile these viewpoints.



Team member

Team member are responsible for the creation of the Viewpoints



FAQ

Project

How do I create a project?

After you log in click on “Project”

Click on “New”

Enter the name of the project (eg “ATM System”)

Enter the systems Name (eg “ATM”)

Enter the actor types (eg “customer”, “bank host”, “operator”)

Click on “Create Project”

If you want to work on this project that you created you must open it first

How do I open a project?

Click on “Project”

Click on “Open”

Select the project you wish to open from the drop down combo box

Click on “Open Project”

A project icon will appear at the bottom of the main screen

(The one with a red dot in it with the words “project: project name” next to it)

Click on the project icon if you wish to edit the project

How do I add an actor?

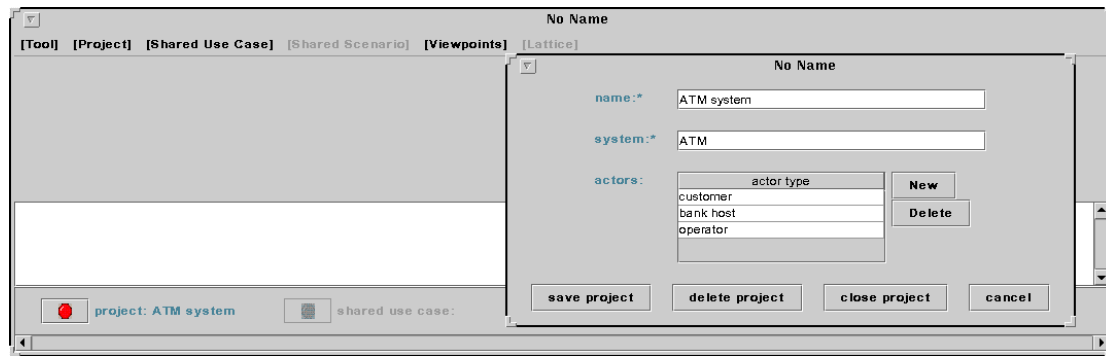
Open the project (see: “how do I open a project?”)

Click on “New” next to the list of actors

Type in the actor type

Click on “save project”

(You will have to reopen the shared Use Case)



Note: The “ATM system” project has been open

Shared Use Case

How do I create a new “Shared Use Case”?

Make sure that the correct project is open

Click on “Shared Use Case”

Click on “New”

You must enter a use case

We recommend that you also enter the “funct. requirements” and “actors”

Click on “Save new use case”

How do I open a “Shared Use Case”?

Make sure that a the correct project is open

Click on “Shared Use Case”

Click on “Open”

Select the shared use case you wish to open from the drop down combo box

Click on “Open Use Case”

A “shared use case” icon will appear at the bottom of the main screen

(The one with a red dot in it with the words “shared use case: name of shared use case” next to it)

Click on the icon if you wish to edit the shared use case.

Note: you can only have one “Shared Use Case” open at a time

The screenshot shows a software window titled "No Name" with a tab icon. The interface is divided into several sections:

- func. requirement:** A text input field containing "withd raw money".
- name:*** A text input field containing "withd raw money".
- system:** A label "ATM".
- actors:** A table with columns "actor" and "New". The "actor" column contains "customer" and "bank host". There is a "Delete" button to the right.
- trigger:** An empty text input field.
- preconditions:** A table with columns "#", "precondition", "New", and "Delete".
- success endconditions:** A table with columns "#", "success endcondition", "New", and "Delete".
- failed endconditions:** A table with columns "#", "failed endcondition", "New", and "Delete".
- success Main Flow:** A table with columns "step", "action / state", "New ...", "Copy ...", "Move ...", and "Delete ...".
- extensions:** A table with columns "step", "action / state", "New ...", "Copy ...", "Move ...", and "Delete ...".
- subvariations:** A table with columns "step", "action / state", "New ...", "Copy ...", "Move ...", and "Delete ...".

At the bottom of the window, there are several buttons: "save usecase", "Pre verify rules", "verify rules", "delete usecase", "close usecase", and "minimize".

Use Case / Viewpoint

How do I create a use case viewpoint?

Make sure that a the correct project is open
Click on “Viewpoints”
Click on “New Use Case Viewpoint”
Enter a Viewpoint name
Enter any other data that you wish to enter
Click on “Create viewpoint”

How do I open a (use case / scenario) viewpoint?

Make sure that a the correct project is open
Click on “Viewpoints”
Click on “Open Viewpoint”
A screen will come up showing all the use case and scenario viewpoints
Select the viewpoint you would like to open
Click on “Open viewpoint”
A “viewpoint” icon will appear at the bottom of the main screen
(The one with a red dot in it with the words “viewpoint: viewpoint name” next to it)
Click on the icon if you wish to edit the viewpoint.

How do I delete an actor?

Select the actor that you want to delete (this can be a little bit tricky, If the selected actor has a grey background then reselect the actor from the list)
Click on “Delete”

How do I insert a new step?

Click on “New”
Specify the type of step from the drop down combo box
Select where the new “step”/ “sub step” should be inserted
Click “ok”

How do I insert a new actor?

Make sure that the correct “use case” is selected from the drop down combo box
Click on “New” next to the actor list
Select an actor from the drop down combo box
(If the combo box is grey in colour this means you have not selected an actor)
If the actor you wanted to add is not in the list then you must add this actor to the project actor list
(Contact your project leader)

How do I Delete a step?

Select the step you want to delete
Click on “Delete”
Note: every sub step will be deleted.
For example if I delete step 2.3 then step 2.3.1 , 2.3.2 ... etc will also be deleted

How do I move a step?

Select the step you want to move
Click on “Move”
A screen will appear with some option
Select where you want to move the step to
Click “ok”
Note: some steps will have be renumbered

How do I check if I am following the guidelines?

Click on “Pre verify rules” if everything is ok then

Click on “verify rules”

How do I insert a new precondition/susses end condition/failed end condition?

Click on “new”

A new line will be inserted to the table

Select this new line and type in the condition

Press “Enter” when you finish

How do I save my Viewpoint?

Click on “Save”

usecase: withdraw money

name:* withdraw moneyA

system: ATM

actors:

actor
customer

trigger:

preconditions:

#	precondition
---	--------------

success endconditions:

#	success endcondition
1	The ATM is ready to serve.
2	The customer has the cash.
3	The customer has a card.

failed endconditions:

#	failed endcondition
1	The ATM is ready.

success Main Flow:

step	action / state
1	The customer inserts the card in the ATM.
2	The ATM checks if the card is valid.
2.a	If the card is valid.
2.a.1.a	Repeat less than four times and until the code is valid
2.a.1.a.1	The ATM gives a prompt for the code to the customer.
2.a.1.a.2	The customer enters the code in the ATM.
2.a.1.a.3	The ATM checks if the code is valid.
2.a.1.a.a	If the code is valid before the fourth time
2.a.1.a.a.1.a	Repeat less than four times and until the amount is valid
2.a.1.a.a.1	The ATM displays a prompt for the amount to the customer

extensions:

step	action / state
2.a.1.b.a	If the code is not valid before the fourth time
2.a.1.b.a.1	The ATM display a message "Invalid code" to the customer.
2.a.1.b.a.2	The ATM keeps the card.
2.a.1.a.a.1...	If the amount is not valid before the fourth time.
2.a.1.a.a.1...	The ATM displays the message "Invalid amount" to the customer.
2.a.1.a.a.1...	The ATM keeps the card.
2.b	If the card is not valid.

subvariations:

step	action / state
------	----------------

Group Viewpoints

How do I create a “Group Use case viewpoint”?

Make sure that a the correct project is open
Make sure that a the correct shared use case is open
Click on “Viewpoints”
Click on “Create Group Use case viewpoint”
Enter a name for this group
Click on “ok” (at this point the group is created)
A screen should appear for you to add viewpoints to the group.

How do I open a “Group Use case viewpoint”?

Make sure that a the correct project is open
Make sure that a the correct shared use case is open
Click on “Viewpoints”
Click on “Open Group Use case viewpoint”
Select the one you wish to open from the drop down combo box
Click on “Open”

How do I add a viewpoint to a “Group Use case viewpoint”?

Make sure that a the correct project is open
Make sure that a the correct shared use case is open
Make sure that a the correct “Group Use case viewpoint” is open
Select the viewpoint you want to add from the list on your left
Click on “> add >”
The viewpoint you selected should now be in the list on the right side of the screen

How do I create a Viewpoint that contains all viewpoints in my “Group Use case viewpoint”?

Make sure that a the correct “Group Use case viewpoint” is open
Click on “make viewpoint”
Enter a name for this viewpoint
This new viewpoint can now be opened like any other viewpoint

The screenshot shows a software interface for managing viewpoints. The main window is titled "Group viewpoint" and has a "No Name" title bar. It features a "Name" field containing "withdraw money" and a "Notes" field containing "see the time it takes to create a Lattice". Below these fields are two panes. The left pane shows a tree view of viewpoints under the usecase "withdraw money", including "viewpoint: withdraw moneyA [agentA]", "viewpoint: withdraw moneyB [agentB]", and "viewpoint: withdraw moneyC [agentC]". The right pane shows a list of viewpoints: "vp: withdraw moneyA [agentA]", "vp: withdraw moneyB [agentB]", and "vp: withdraw moneyC [agentC]". Between the panes are buttons for "> add >", "< Open VP", "< remove <", and "Refresh". At the bottom, there is a "data of viewpoints" section with checkboxes for "precondition", "success endcondition", "failed endcondition", "success Main Flow" (checked), "extensions", and "variations". A footer bar contains buttons for "Save", "Delete", "make viewpoint", "Open Table", "Create Table", "Create Lattice", and "Close".

Notes: All Viewpoint belong to this Group Viewpoint

Resolution Tables

How do I create a resolution table?

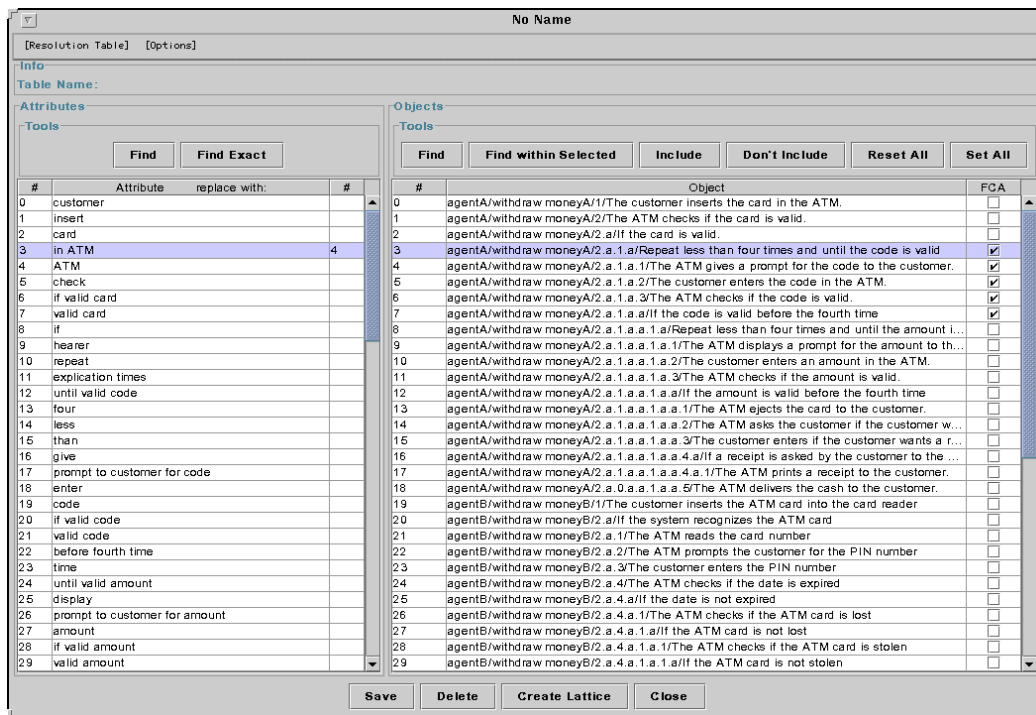
- Make sure that a the correct project is open
- Make sure that a the correct shared use case is open
- Make sure that a the correct “Group Use case viewpoint” is open
- Click on “Create Table”

How do I create a lattice using a resolution table?

- Make sure that a the correct project is open
- Make sure that a the correct shared use case is open
- Make sure that a the correct “Group Use case viewpoint” is open
- Click on “Create Table” or “Open Table” if you made one before
- Click on “Create Lattice”

How do I create a diagram that only contains sentences about the “system”?

- Make sure that a the correct project is open
- Make sure that a the correct “Group Use case viewpoint” is open
- Click on “Create Table” or “Open Table” if you made one before
- Click on “Reset All” (this will unselect all the sentences)
- Click on “find”
- Enter the word “system”
- Click “ok”
- The tool will highlight the sentences that contain the word “system”
- Click on “Include”



- Notes:
- Attribute 3 is selected
 - Attribute 3 “in ATM” will be replaced by attribute 4 “ATM”
 - Sentence 3 is selected
 - Sentence 3-7 will be included in the lattice

Lattices

How do I create a lattice?

Make sure that a the correct project is open
Make sure that a the correct shared use case is open
Make sure that a the correct “Group Use case viewpoint” is open
Click on “Create Lattice” (this method will not use the resolution table)

How do I hide a node from the diagram?

Select the node you want to hide
Hit the “delete” key
OR
Go to the menu “view” then click on “Hide node”

How do I hide a node and its children?

Select the parent node
Hit the “end” key
OR
Go to the menu “view” then click on “Hide Branch”

How do I unhide a node ?

Hit the “insert” key
OR
Go to the menu “view” then click on “Undo Hide” or “Show All”

How do I show the viewpoint names in the diagram?

Go to the menu “Objects”
Click on
 “Show Objects”
 or “Show Object Set” (this will only show you the object number)
 or “Show More Objects” (this will also show you hidden objects inherited from hidden nodes)

My diagram looks very messy how do I fix it up?

Go to the menu “Layout” and then click on “Apply Layout”
Tip:
Something that I find useful is doing the following
Go to the menu “Layout” and then click on “Apply Layout”
Then select a top node on the left hand side of the diagram (but not the very top node)
Hide this node and then unhide the node
Go to the menu “Layout” and then click on “Apply Layout”
You will notice that this node is now at the very far right of the diagram!! (most of the time)
This can be useful when you want to move some nodes around but still keep the nice look that the “layout” provides.

All the nodes are close together how do I separate them?

Go to the menu “Layout” and then click on “Spread”
(You might want to do this first: go to the menu “Layout” then click on “Apply Layout”)

How do I move just the one node to a different position?

Select the node that you want to move then drag it to its new position.

How do I calculate the “distance” between the viewpoints?

Go to the menu “tools” then click on “Find Distance”

How do I let the system know to ignore a node when calculating the distance between viewpoints?

see: How do put the flag IGNORE on top of the a node?

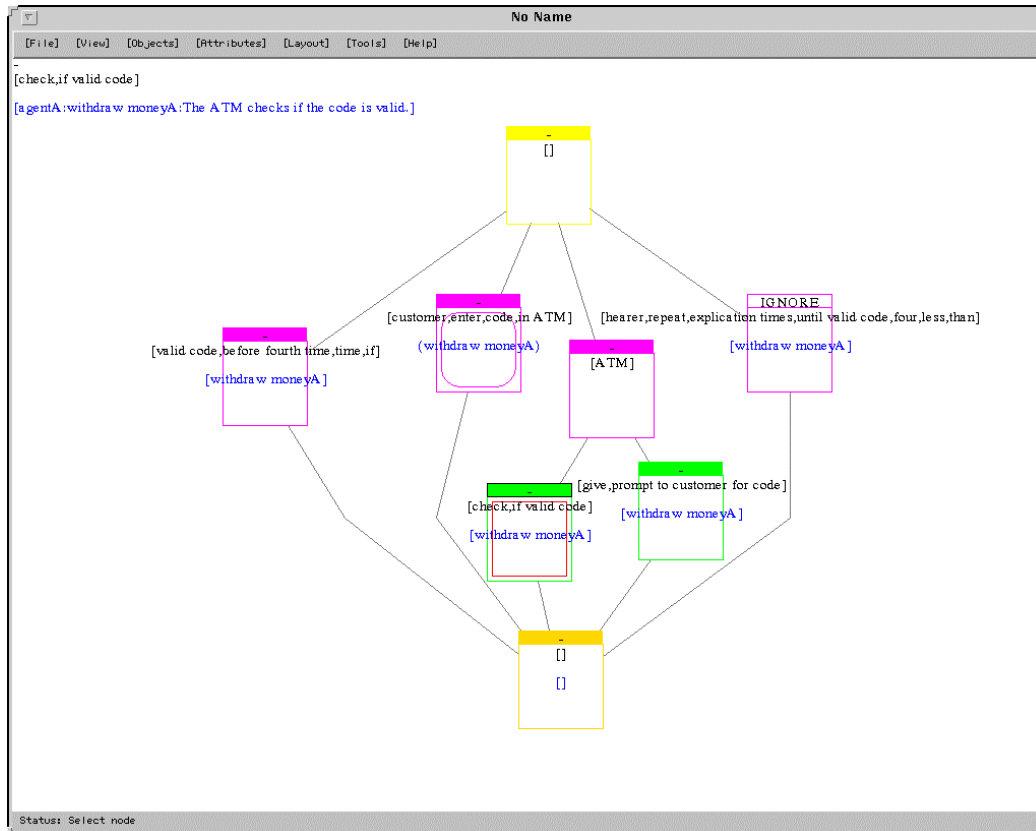
How do I put the flag IGNORE on top of the a node?

Select the node by using the right button on the mouse

A screen should come up
Select the flag IGNORE from the drop down combo box
The screen should disappear and the node should now have the flag ignore

How do I insert a sentence from a node into the shared use case?

Select the node by using the right button on the mouse
A screen should come up
Select the sentence from the drop down combo box
Click on Add



Notes: The second purple node is included in the shared use case
The fourth purple node will be ignored in the distance calculation
The first green node is selected and its data displayed on the top left corner of the window

General

How do I bring a partly hidden window to the front?

Put the mouse over the window and then hit the "F12" key

How do I quit the system?

In the main window go to the menu "tool"

Then click on "Quit"

Why do I get a message saying, "Please finish editing row"?

The system displays this message when it doesn't know if you finish editing a row, you let the system know that you have finish by pressing the "Enter" key after inserting the data

How do I make a "Screen Capture"?

In the command line type xfig

Click on the icon "picture" (it looks like an old camera)

Go to the canvas (in xfig) and place the picture in it by clicking the right mouse one for the top left corner and clicking again for the bottom right corner.

An option screen should come up

Click on "Screen Capture"

After xfig disappears click on the screen you want to capture

Click on "use original size"

Click on "Done"

Click on "Export"

Guide Lines

1. Use the same word to refer to the same thing each time (eg not customer one time and client another time).
2. Do not use personal pronouns (e.g. he, she, it, them)
Do not use possessive pronouns (e.g. his, her, hers, its, their)
3. Do not use modal verbs (e.g. will-would, may-might, can-could, shall-should).
4. Do not use adverbs (e.g. quickly, accurately, firstly).
5. Avoid the use of OR and AND
6. Use quotation marks to mark messages, captions and use-case titles, for example: The system invokes the **“login use-case”**, The system displays the message **“Error- User Not Found”**)
7. Always use a noun together with a determiner ‘a’ or ‘the’ (e.g. **The** user inserts **a** card)
8. Use the phrase ‘of’ instead of the possessive form. (e.g. the card **of** the user instead of the user’s card)
9. Each sentence should describe an action (verb) or a conditional statement starting with “if” (e.g. if the card is valid). Each sentence should begin with a number to indicate the order of steps. Use numbers to indicate substeps of an action eg 1.1.
10. Do not use negation.
11. Use verbs in the present tense.
12. Write the sentences in order. Don’t refer to previous or future steps.
13. Each sentence in template 1 must include the subject which triggers the action and must be either the system or an actor.
14. Do not write sentences that might be ambiguous – make the subject, object and action clear. For example: The boy saw the girl with the telescope should be EITHER The boy with the telescope saw the girl OR The boy saw the girl who has a telescope